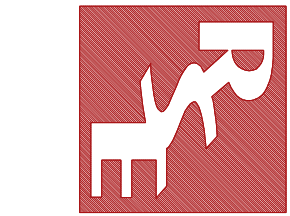


REV	DATE	BY	CHK	APP	DESCRIPTION

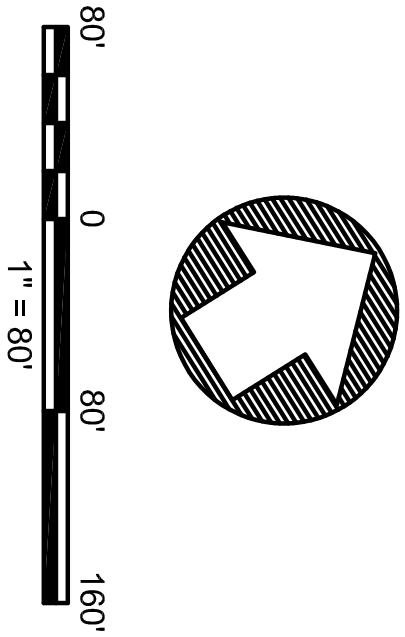
DESIGNED BY	S. SANTOS
DRAWN BY	S. SANTOS
CHECKED BY	C. FESTIA
IN CHARGE	C. FESTIA
DATE	01/07/2026



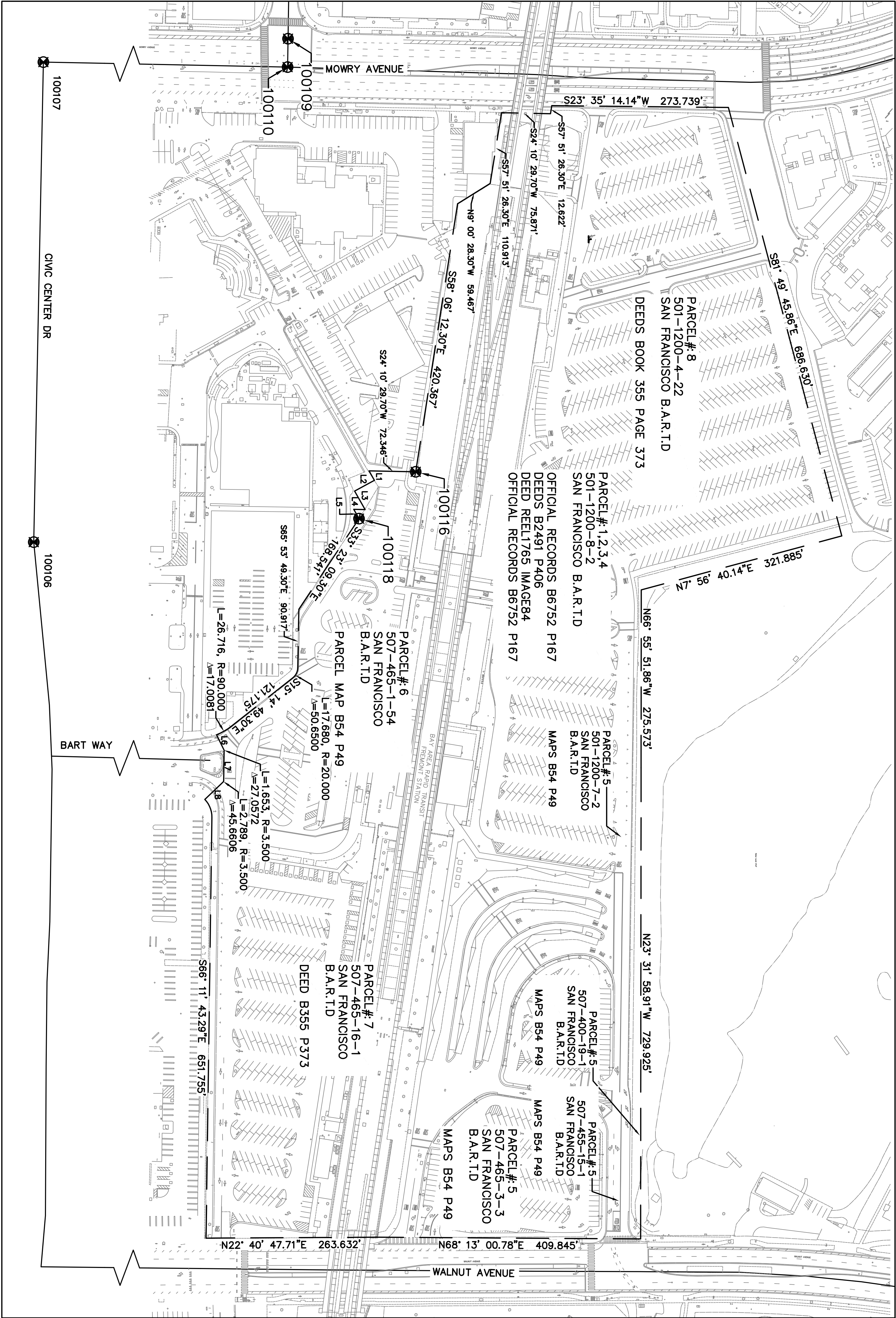
RSE CORPORATION  
1820 GATEWAY DRIVE  
SAN FRANCISCO, CA 94133  
WWW.RSECORP.COM

SAN FRANCISCO BAY AREA  
RAPID TRANSIT DISTRICT

FREMONT BART STATION  
ROW EXHIBIT



POINT NUMBER	NORTHING	EASTING	DESCRIPTION
100106	2028225.6690	6132828.6550	FOUND 2 1/2" BRASS DISK WITH PUNCH STAMPED "CITY MONUMENT FREMONT CA"
100107	2028643.2080	6132213.1410	FOUND 2 1/2" BRASS DISK WITH PUNCH STAMPED "CITY MONUMENT FREMONT CA"
100109	2029276.267	6132589.708	FOUND 2 1/2" BRASS DISK WITH PUNCH STAMPED "SF BARTD TRAVERSE STATION MARKER"
100110	2029251.816	6132626.190	FOUND 2 1/2" ALUMINUM DISK WITH PUNCH STAMPED "CITY OF FREMONT R.E.NO"
100116	2029076.793	6133260.287	FOUND 2" OPEN IRON PIPE ALONG FENCE
100118	2028963.632	6133273.198	FOUND 3/4" IRON PIPE WITH YELLOW CAP AND TACK STAMPED "RCE"



LINE	BEARING	DISTANCE
L1	S24°10'29.70"W	72.346'
L2	S83°21'31.70"W	16.820'
L3	S05°25'54.30"W	35.003'
L4	N83°21'31.70"E	32.993'
L5	N24°09'31.70"E	17.539'
L6	N86°44'50.70"E	25.690'
L7	S66°11'43.30"E	46.238'
L8	S20°32'05.30"E	38.833'

NOTE:  
THIS EXHIBIT IS FOR REFERENCE ONLY AND IS NOT CONSIDERED AN OFFICIAL BOUNDARY SURVEY. PRIOR TO CONSTRUCTION ALL ROW LINES MUST BE VERIFIED. BEARINGS ARE BASED ON FOUND MONUMENTS AND RECORD INFORMATION. ADDITIONAL INFORMATION ON PARCELS CAN BE FOUND IN TITLE REPORT FROM OLD REPUBLIC TITLE COMPANY 1117028682-JM

LEGEND:

- FOUND SURVEY MONUMENT
- APPROXIMATE BOUNDARY LINE
- APPROXIMATE STREET CENTERLINE

